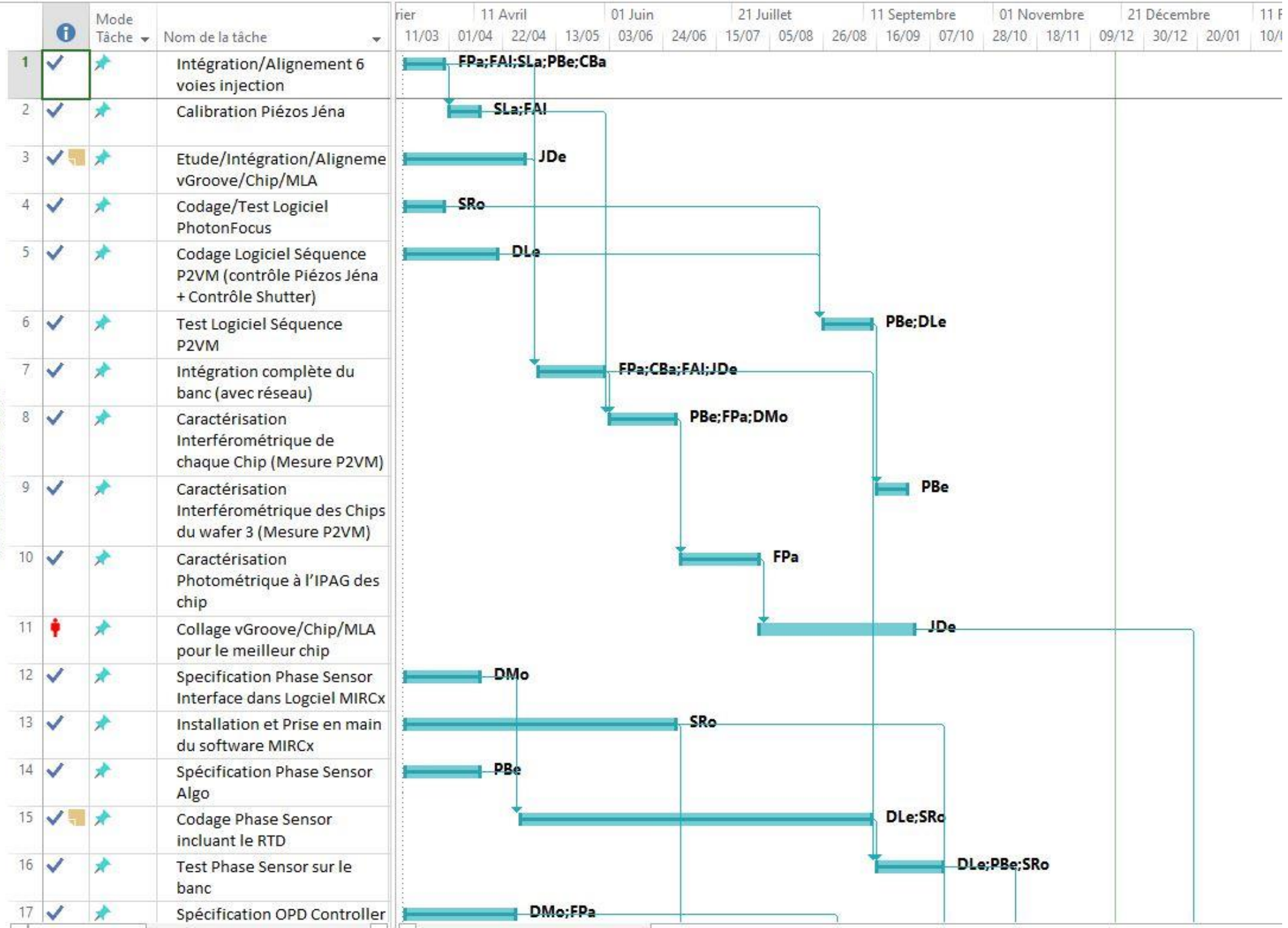
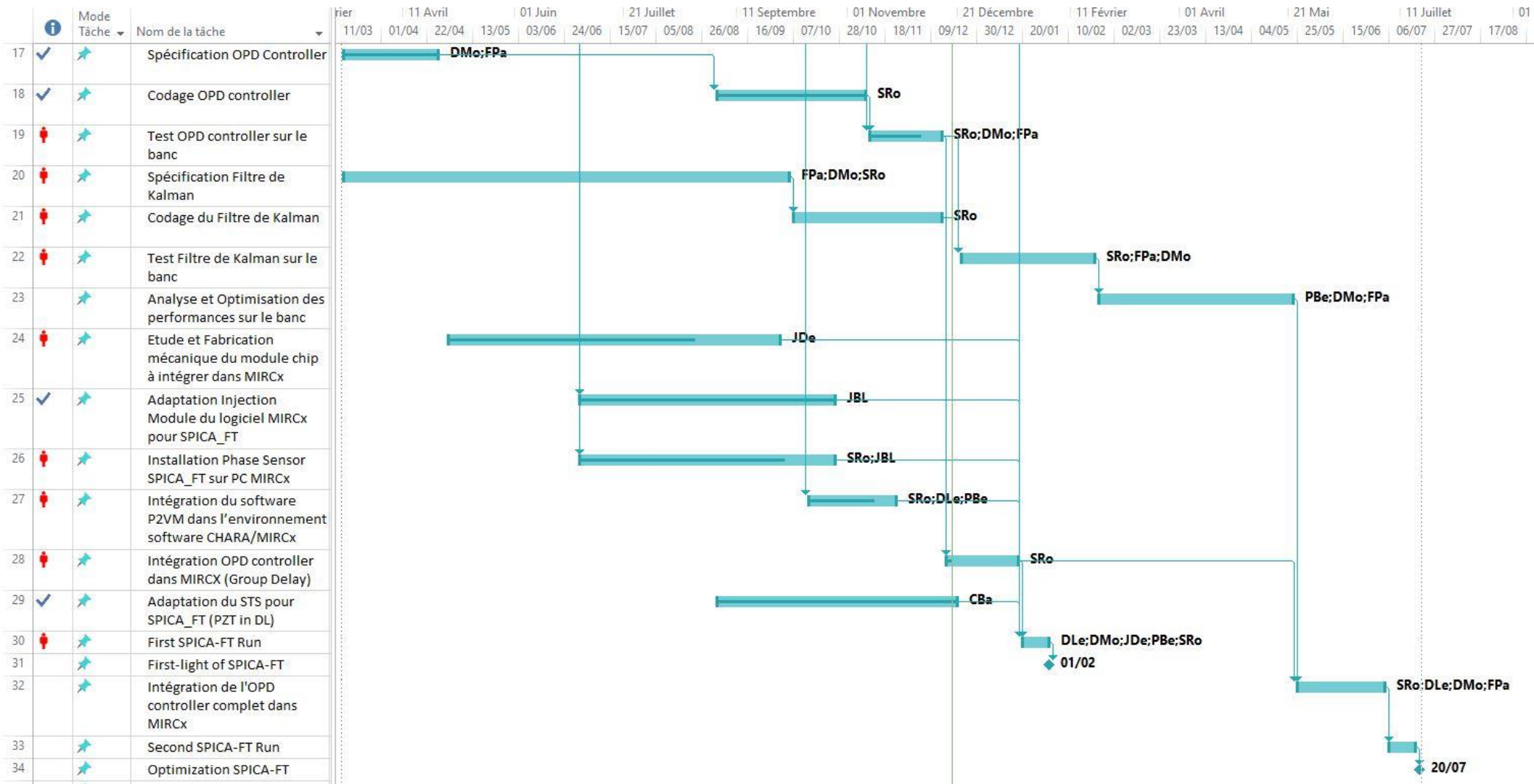
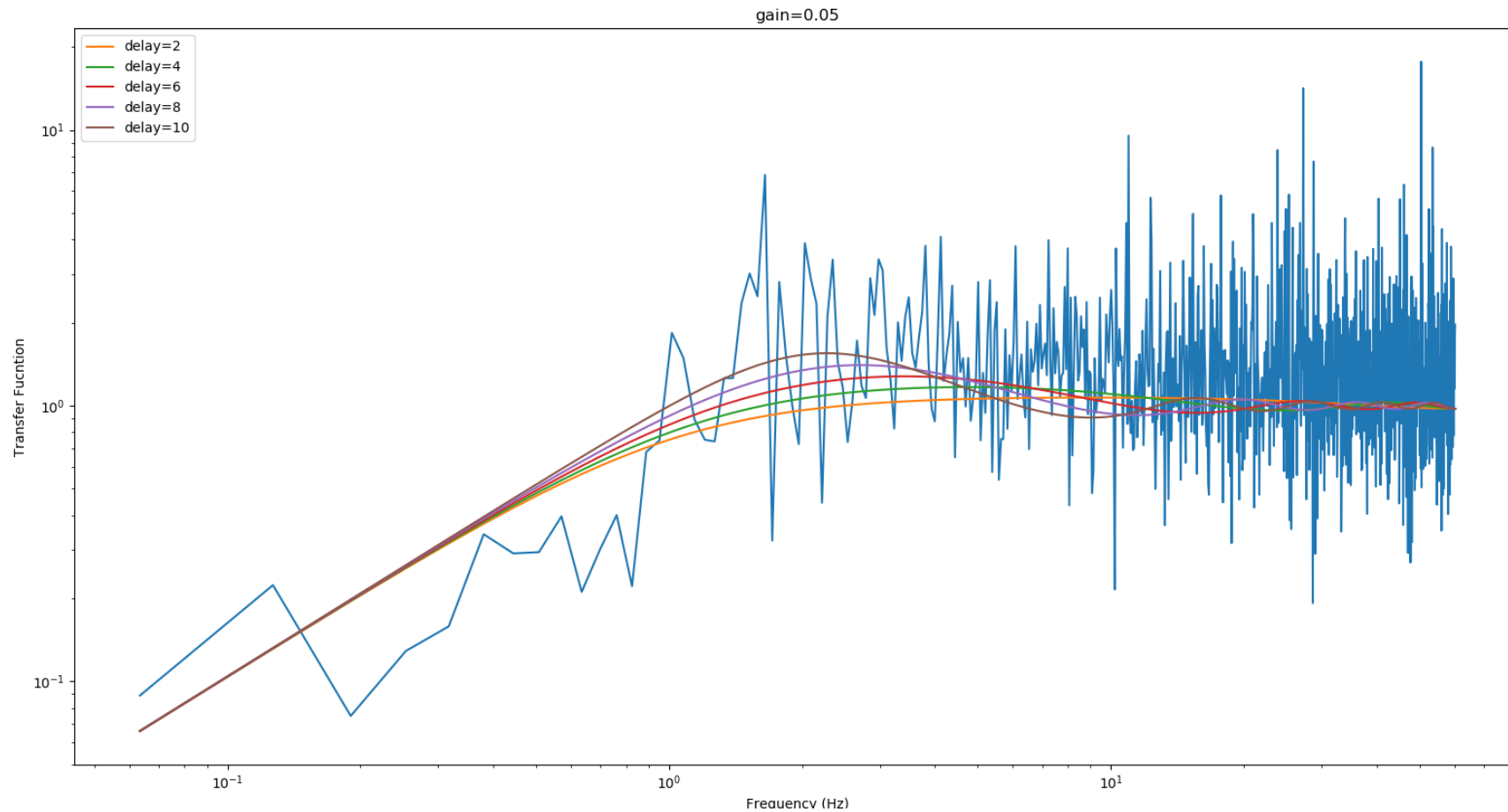


DIAGRAMME DE GANTT







This plot (in blue) presents the first estimation of the transfer function of the GD close loop on the 15 baselines of the SPICA-FT testbed. It should be noted that the performance is not representative of what is expected as we are using a lab IR detector (exposure time 8ms) and a very old computer.

Various theoretical models of a pure integrator with delays (in number of frames) are presented. Various tests of stability (shutter ON/OFF) have been performed.